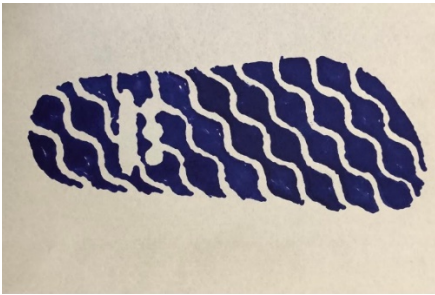


## EVA INJECTED LINE

### 3 Styles



New footprint

#### All styles are quoted with:

- 1- Logo on insole
- 2- Polybag with hanging hole
- 3- Terms: EXW
- 4- Net prices with no discount
- 5- Adhesive labels with information and barcode

#### Extra costs:

- 1- Buckles engraved with customer's logo: + 0'35€ per pair.
- 2- Laser engraved at the side: +0'40€ per pair.
- 3- Shoebox Brown in recycled dashboard: +0'27€ per pair.
- 4- recycled plastic pvc hanger to hang: +0'15€ per pair.

## Style 2 Buckels



Serie: 35/42 Price: **6,70 €**  
Serie: 39/47 Price: **6,90 €**

---

## Style Mule



Serie: 35/42 Price: **6,90 €**  
Serie: 39/47 Price: **7,30 €**

## Style Giselle



Serie: 35/42 Price: **6,70 €**

Serie: 39/47 Price: **6,90 €**

---

## Style Salomon



Serie: 36/47 Spring/Summer: **6,7 €**

With lining for Winter: **10,60 €**

---

## New Style

MADE IN SPAIN



Model ready to be manufactured by the end of March 2023

Serie: 35/42 Price: **7,10 €**

Serie: 39/47 Price: **7,30 €**